



Thomas Hardie Commercials Ltd

VEHICLE SAFETY SYSTEM CAMERA OPERATION GUIDE



Contents Page

Page 3 - **Direct Vision Standard – DVS System**

Page 7 - **Multi Camera Systems**

Page 8 - **Spillard Live System**

Page 15 - **Installing the Live System**

Page 18 - **DVR Reader User Guide**

Page 21 - **Trouble Shooting**

Page 24 - **Breakdown and Repairs**



DIRECT VISION STANDARD - DVS

Is a HGV safety permit for operators entering London.

The Direct Vision Standard is an objective measure of the volume of space visible directly by the driver. HGVs will be rated 0-5 stars where 0* is poor direct vision and 5* is excellent.



Transport for London Update

Enforcement was introduced on March 1st 2021. Under the scheme it is unlawful to operate an HGV more than 12 tonnes GVW in the Greater London area without a permit.

Why was this implemented?

The Mayor of London has adopted **Vision Zero** for road danger in our capital city, aiming for all deaths and serious injuries from road collisions to be eliminated from London's streets by 2041.

Vision Zero means ensuring the street environment incorporates safe speeds, safe behaviours, safe street design and safe vehicles in an attempt to target road danger at its source.

How will this be achieved?

To achieve this target and reduce the risk relating to heavy goods vehicles (HGVs) and people walking and cycling, TFL have developed the world's first Direct Vision Standard (DVS) and will be issuing a safety permit for all lorries more than 12 tonnes GVW entering or operating in Greater London.

How do I make my vehicle compliant?

If your vehicle does not meet the DVS star rating or is not rated, you will need to meet the **'Safe System'** requirements to be granted a permit.

What is a Safe System?

1. Class V mirror shall be fitted to the nearside of the vehicle
2. Class VI mirror shall be fitted to the front of the vehicle
3. Side under-run protection shall be fitted to both sides of the vehicle
4. External pictorial stickers to warn vulnerable road users of the hazards
5. A sensor system that alerts the driver to the presence of a vulnerable road user
6. Audible vehicle manoeuvring warning shall be fitted to warn vulnerable road users when a vehicle is turning left
7. A fully operational camera monitoring system shall be fitted to the nearside of the vehicle







5. Near Side Proximity Sensors (PSR201)

An audible & visual display is activated when an object or vulnerable road user is detected.



6. Voice Synthesised Turn Left Alarm (SPA009)

When the left indicator is activated a message can be heard on the outside of the vehicle 'Caution Vehicle Turning Left'

The system includes a 3-minute night silent cut, failing to activate.



7. Near Side Camera System (OP700 Series)

A cab mounted 7" monitor or Volvo screen, will display the near side camera when the lefthand indicator is activated.

MULTI-CAMERA SYSTEM

Designed for the future of connected vehicle technology multiple cameras can be installed in any configuration, standard systems utilising five cameras: front, rear, near and offside, and either an in cab or load viewing. An in-cab monitor or the Volvo screen, with a live view of the rear and nearside cameras are installed for the sole purpose of increasing the driver's visual awareness around the vehicle.

The images from the rear camera appear when the reverse gear is engaged and from the nearside camera when the left-hand indicator is activated. The load camera is selectable from a dash mounted switch. The rear camera overrides the nearside and load cameras.

Cameras

The range of cameras really has something for all vehicle types. From rear-view/reversing camera to side view and wide eye cameras. This technology really can see what you cant and is captured in rear time with the use of recorders.

The range of cameras are tough, have adjustable mountings are weatherproof and some have infrared night vision. With this technology you can be sure that your field of vision is completely covered at all times. Allowing peace of mind whilst operating your vehicle day or night.

The range of cameras have a rating of IP69K which means that are ideal for facilities where hygiene and cleanliness are critical. They are proven to be durable and resistant against water, chemicals, high pressure, and high temperatures associated with demanding cleaning and safety measures.



Rear-view camera

Immediate rear-view vision
Capture loading and unloading of vehicle whilst in bay
Capture passing traffic and pedestrians while stationary or manoeuvring in reverse
Record theft or tampering from the rear of vehicle, viewed as deterrent to crime



Side-view camera

Immediate side-view vision
Close parking assistance
Incident capturing of passing cyclist and traffic
Incident passing pedestrians when stationary
Captures vehicle being loaded/unload from the side



Side-view camera



Front-view camera

Immediate front-view vision
Incident capturing of traffic on road
Incident capturing of passing pedestrians
Immediate hazards in front of vehicle when moving and static

SPILLARD LIVE SYSTEM

The Spillard Live System gives immediate access to data when an incident occurs.

You can track a vehicle in real-time with live video and analytics that may be used as visual evidence for protection against fraudulent claims and aggressive drivers.

The data received is analysed using complex algorithms to improve driver behaviour in real-time.

The Spillard Live platform can automatically alert data processors to incidents without the need to continuously monitor drivers, these alerts can be set to notify for example video loss, cameras covered, impact or collision with other vehicles, harsh braking, sudden acceleration.



Accessing the Live System

Local Software

View live and historical data and footage whilst drivers are on the road through local software monitoring driver behaviour from anywhere. View various vehicle data at the same time and take recordings for insurance purposes.

Login to the System

Once the software has been downloaded, click on the Spillard Live icon, enter your credentials provided in your welcome email.

Type - Server
Server Ip -
User -
Password -
Then click ok

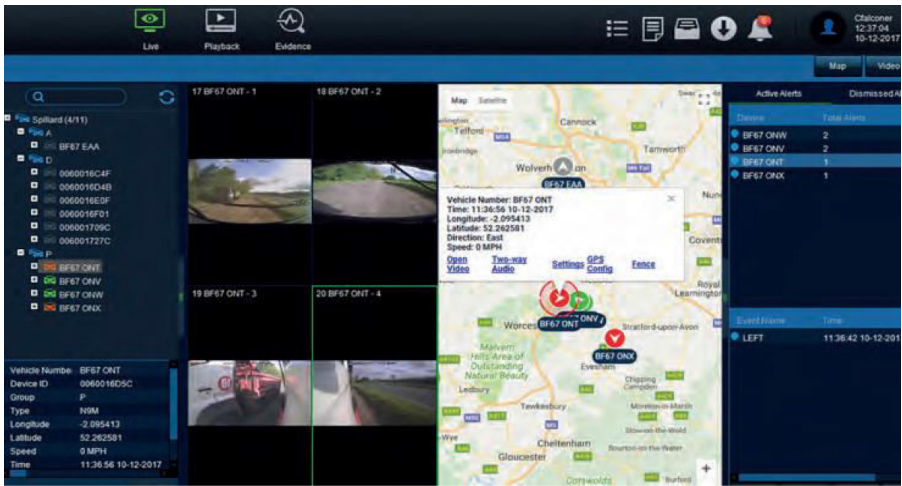
Live Function

Type	Server	Advanced
Server IP	185.17.172.8	Advanced
User	Administrator	
Password	*****	
<input checked="" type="checkbox"/> Save Password		
OK		Cancel

Real-Time Information

View what location all vehicles are at any time.

Below is an example of travelling, stationary and registered vehicles not in use.



Fleet Groups

Fleet groups of folders can be set up with a collective of vehicles in each one.



Tip: You can double click on a registration on the list to view the live footage.



SPILLARD
vehicle safety systems

See What the Driver Sees

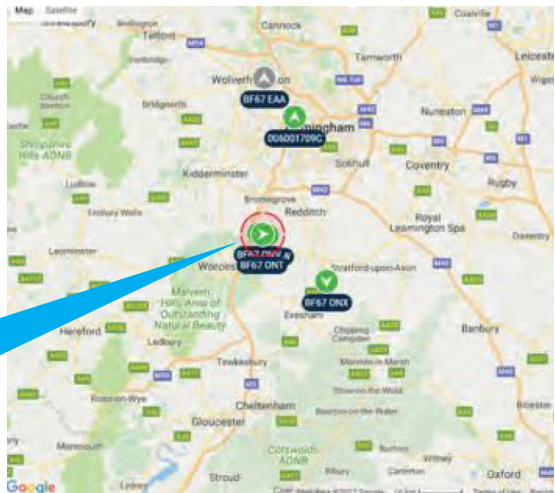
All channels from one vehicle can be viewed at once. Below are four channels shown on this system, it can hold as many channels as needed to suit customer needs.



Tip: [Click here for full screen mode](#)

See the Drivers Location

View where all the drivers are via Google Maps. This allows users to see if drivers are at expected locations on time, en-route etc without having to get in contact with the driver.

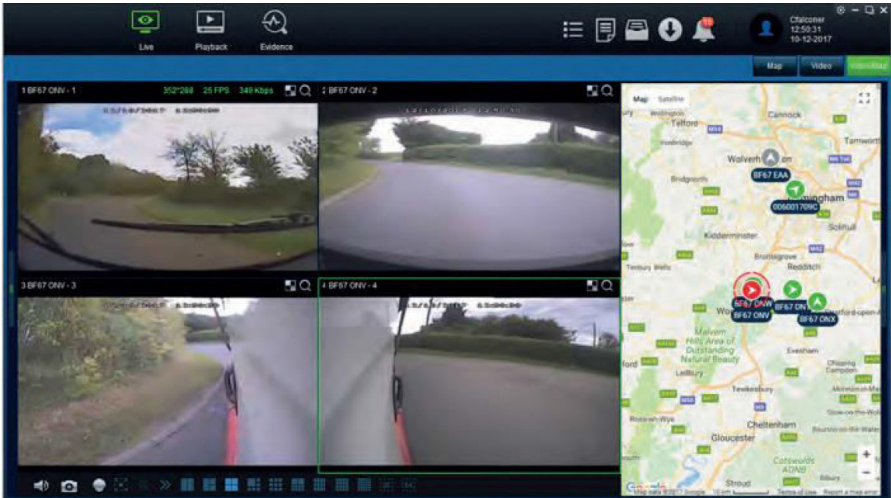


Viewing Maximum Data

View all vehicles channels and map data at the same time by double clicking every vehicle in your fleet.



Tip: To clear all video footage and save computer resource, right click live video and select clear all.

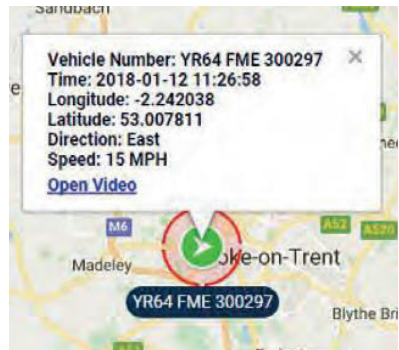
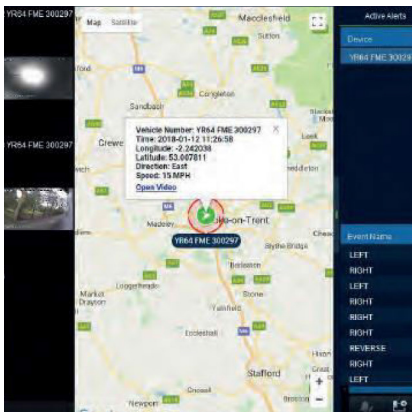


Driver Events

Users will be able to view actions drivers are taking, for example turning left and right.

View Individual Vehicle Data

View data such as vehicle speed and direction



PLAYBACK FUNCTION

Historical Data – Server Tab

The server tab allows the viewing of a route recorded from start to finish on a specific date. Data take includes the driver's actions.



Use the calendar on the left to select the date required.

Once chosen the data should load providing a mapped-out route, much like Google Maps.

Select by clicking any area along the route, or timeline below to view the data.



Online Tab

The online tab allows the viewing and downloading of footage from a specific date.



Use the calendar on the left to choose a historical date.

Once chosen the data will load providing the video footage, a timeline of all channels and a map of the location.

Select by clicking any area along the timeline to view the video footage and location of the vehicle at that time.

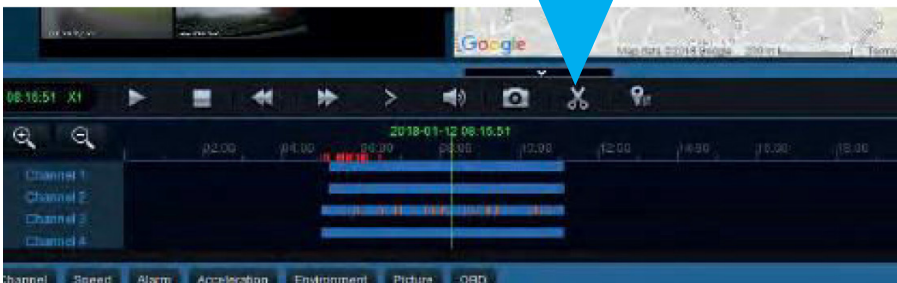
Double tap on any image to see the full image only.

Download footage to Local Folder



Tip:

To capture a selection of footage, use the scissor icon below. This function is particularly used when downloading evidence for insurance firms.

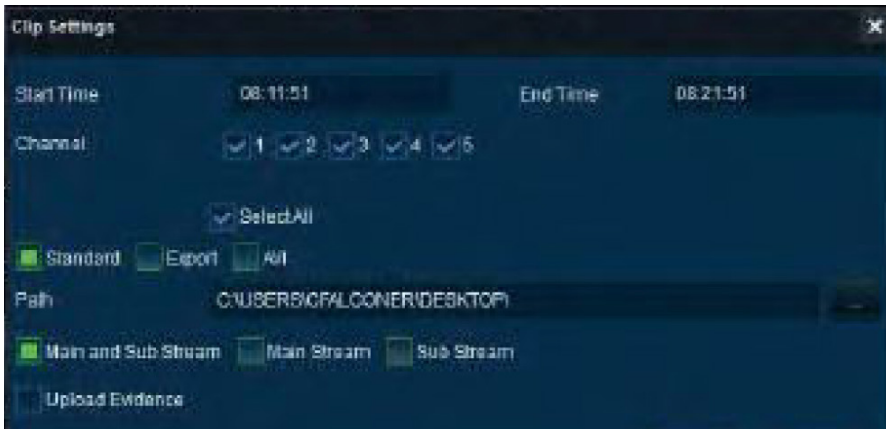


The dialog box below appears.

Choose a start/end time, the channel (camera) required

Suitable formats:

- Standard – Can only be viewed through the Spillard Live software
- AVI – Can be viewed using other media players such as Windows Media Player.
- Path – enables you to choose the location of where you wish to save the footage requested.



Downloading a Still Image

To capture a photo of video footage use the camera icon. Whenever clicked, a message will appear to inform you that the image has been saved and its location.



Tip: Click Camera icon



SPILLARD LIVE SOFTWARE INSTALLATION

This section explains how to download the Spillard Live software, how to install it on your workstations in your library and how to ensure the functionality within your environment.

What Type of File is Used ?

You download each program separately. Software is provided as a self extracting compressed file (file name.zip)

You do not need special software to extract (uncompress) this file.

After extracting the compressed files you can:

Install on one workstation – Install from the folder to which you downloaded the software. After extracting, double click Spillard Live_V---_E(-.-.-).exe to start installation.

Or

Install on several workstations – Copy the downloaded software to your LAN, and then access the Spillard Live_V---_E(-.-.-).exe file on your LAN from each workstation to install the software on the local workstation.

Prepare to Download Software

On your workstations hard disk, create a temporary folder to contain the downloaded file(s).

Example: Under the c:\temp or c:\windows\temp folder, create a subfolder named \Spillard.

Download Software

Note: Downloading software can take several minutes, depending on the speed of your connection.

Navigate to Software downloads link within your welcome email

Enter the password and save to your hard drive

Extract Software Files

Start your internet browser

View the contents of the folder to which you downloaded the software (e.g c:\temp\downloads or c:\user\downloads)

Highlight the file name and press <enter>

In the Win-Zip Self Extractor window, click unzip

Browse to the created temp folder

Click ok and then close

Preparing to Install

Before starting installation

Close all applications

Be a Power User in Windows 2000 or higher to allow you to retain and modify settings and other program files system-wide as needed.

Install Software

Start the setup program

Start your internet browser

Browse to the created temp folder where the unzipped files are located

Double click the Spillard Live_V---_E(-.-.-).exe.

Follow the installation instructions to complete each prompt

At the replace file prompt, do not replace files unless instructed to do so by your system administrator

Delete downloaded files after installing software

Why delete files?

Software distribution files can fill many megabytes of hard-disk space. After installing the software you no longer need these files.

You can download another copy any time you need.

How to delete downloaded files:

Start the browser. <https://www.spillard.com/fleet-management/>

View the contents of the folder to which you downloaded the software (e.g c:\temp\spillrd of c:\temp\[program name])

Delete entire folder for downloaded software – Highlight the folder that contains the downloaded files (e.g. c:\temp\spillard or c:\temp\[program name])

On the File menu click delete

When asked to confirm the action, click Yes or Yes to All

Firewall Preparation

To ensure the software communicates with our network, the following TCP ports will need opening for communication with IP address 20.49.206.172 and domain spillard.live.

12020	12063	443	12040	12198
22047	12041	17891	28090	12045
80	23113	12047	3113	22060
12050	7264	22061	12051	8081
22062	12056	8090	22063	12060
22040	23113	12061	22055	28081
12062	22050			

The intelligent video telematics platform enables the user to track a vehicle in real time with live video and analytics. Historical vehicle data can be downloaded for up to approximately 31 days, depending on shift patterns, that may be used as visual evidence for protection against fraudulent claims and aggressive drivers.

The software for PCs/laptops is now available using the link below.
[http://software.spillard.live/downloads/spillardlive\(2.6.4.06\)_English.zip](http://software.spillard.live/downloads/spillardlive(2.6.4.06)_English.zip)

HOW TO USE THE DVR READER

How to View a Video Clip

Attach the hard drive cradle to your PC/laptop using the supplied interface.

Double click on the Spillard Live software

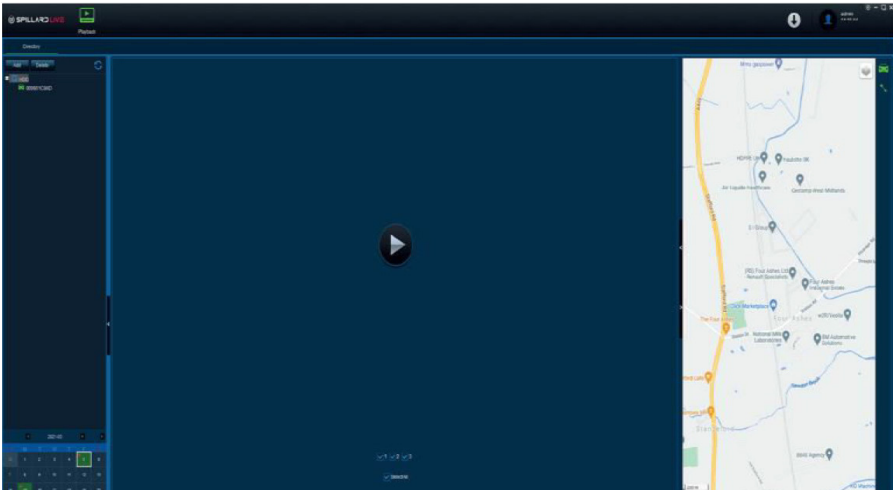
Select 'Local' in the type box

Enter 'Admin' in the user box

Leave the password blank and click ok



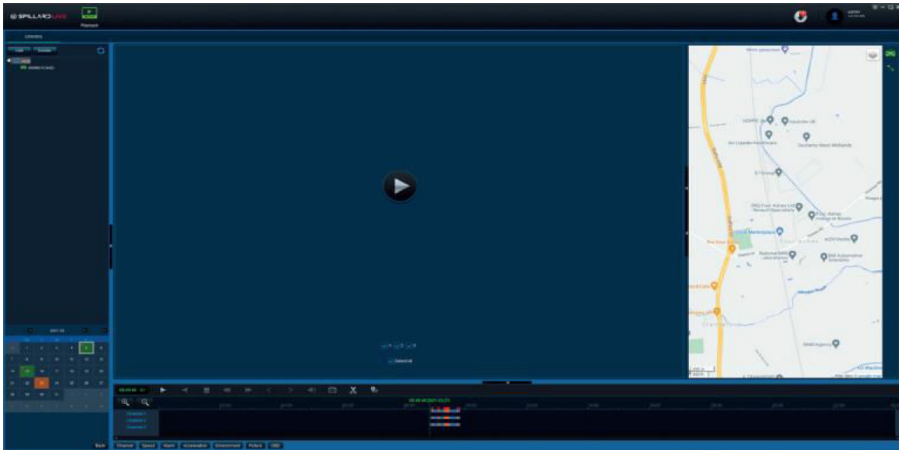
The device should now be visible in the left hand menu, if not click the refresh icon



To view or download video data select the data in the bottom left corner, then press play.

To view the data at different times drag the slider along the timeline.

To Extract a Video Clip With Speed and Location Data



Select the date in the bottom left hand corner

Click the scissors icon, then press ok

Enter the start and end time of the required clip

Select standard

Add a path where the file will be downloaded to. This has to be a local drive, ideally a temporary folder in the root of your C: drive

Click ok



The video clip with the speed and location data will now appear in the left-hand menu.

To view or download video data, select the data in the bottom left corner, then press the play icon.

To Extract a Video Clip Only



Select the date in the bottom left corner

Click the scissors icon, then click ok

Enter the start and end time of the required clip

Select MP

Add a path where the file will be downloaded to. This should be a local drive, ideally a temporary folder in the root of your C: drive

Click ok

The software for PCs/laptops is now available using the link below.
[http://software.spillard.live/downloads/spillardlive\(2.6.4.06\)_English.zip](http://software.spillard.live/downloads/spillardlive(2.6.4.06)_English.zip)



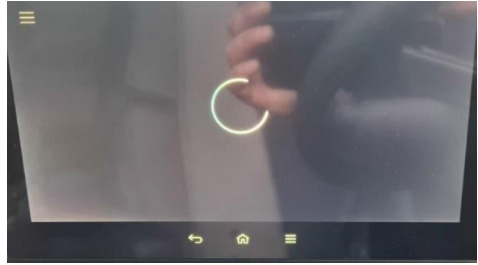


TROUBLESHOOTING

This section should help with basic faults that you may experience.

If the system runs through the Volvo system and the fitted screen will not switch to the camera picture.

Select camera mode. If the screen show a spinning circle these steps should help to clear the fault.



If the volvo screen is unresponsive this can be bypassed by the steering wheel controls. Press the menu button to switch between controlling the primary dashboard display and the secondary display.

Using the arrow keys on the steering wheel control cycle to Trailer Camera and press OK, if the option is shown.



Directional Arrows



Menu Option



Trailer Camera Option



The following settings should also be checked.

Auto reverse mode ON
(only if a reverse camera is fitted)

Auto side mode OFF

Auto bodywork mode ON

Trailer camera ON

As shown in the image on the left.

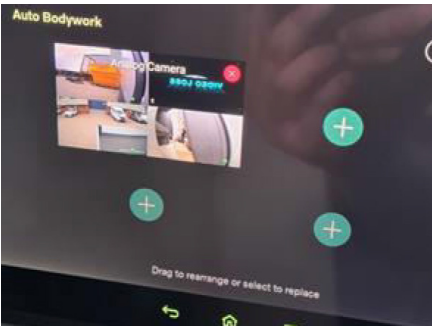
Setting camera pictures



Scroll down the camera menu and select Manage Cameras



Select Auto Body Work



Select top left + symbol to set camera and press select



Select Manage Cameras again
(Only if a reverse camera is fitted to the vehicle, if not skip this section and recheck the camera settings)



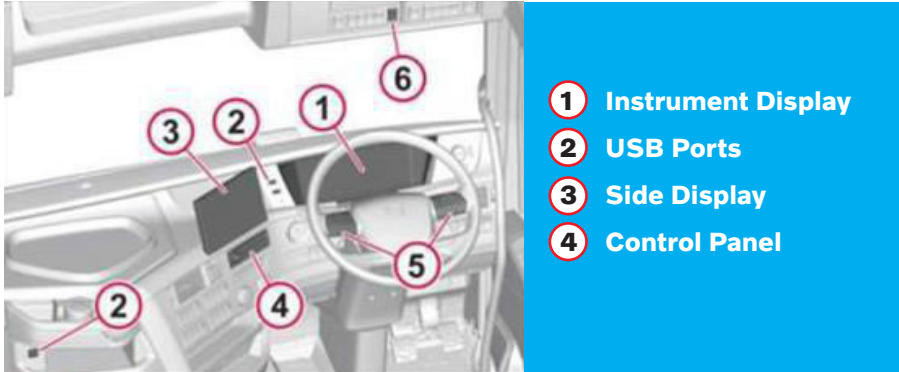
Select Auto Reverse

Finally recheck the camera settings as they can change automatically.

Camera Activation Process

In some circumstances the camera does not show on the driver's secondary display.

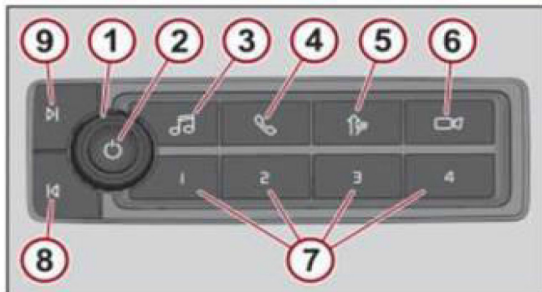
To re-activate the camera the driver can press the camera icon located on the control panel as below indicated on the illustration as number 4.



Control Panel

By pressing the camera icon, button 6 on the control panel as shown above, it will re-activate the secondary driver's display for the near side camera. It may take a few seconds to activate the screen and initially will appear in four quarters – when the left-hand indicator is activated it will appear in full screen view.

Please note the camera is always recording to the hard drive regardless of if the screen is displaying the camera footage or not.



BREAKDOWN AND CALL OUT INFORMATION



**For extra technical help and information
please contact Spillard Safety Systems**

Tel: 01902 703441

If you require a technician to attend the vehicle and check the system.
Please email all details to **Service@spillard.com**

Please detail the current issue with the system,
registration, and location.

A member of the team will be in touch
to discuss attending the vehicle.



Further contact information



Thomas Hardie Vehicle Safety System

Tel: 01257 492820

Email contacts

Kbishop@thardie.co.uk
Scartwright@thardie.co.uk
Jbaldwin@thardie.co.uk
Mharrison@thardie.co.uk

